

Processing the info layers

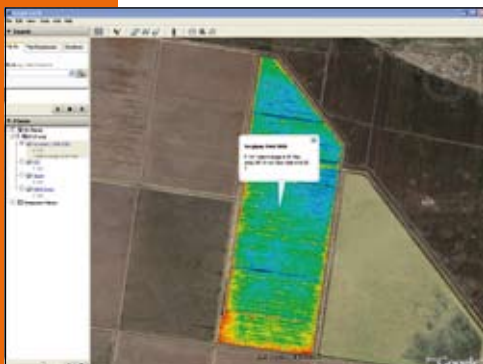
One of the most daunting tasks in dealing with precision agriculture data is the processing. Many hours are often spent sorting, calibrating and swearing at the computer before a map is generated.

Precision Cropping Technologies have recognised that most farmers and agronomists don't have time for this but do have genuine requirements for the layers of information. To cater for this trend PCT have set up a cost effective processing centre which allows any data type or format from any provider in any industry anywhere in the world to be processed and delivered back to the farmer and consultant in two platforms.

Firstly the data can be delivered via Google Earth so it can be viewed quickly and easily by the farmer and agronomist. Typically the farmers want to see the end result and this method of delivery allows clean, quick access to important information.

Secondly, PCT can support the fee for service agronomists with a new software package which gives them the ability to carry out specific tasks such as identifying the return from PA activities like variable rate inputs and the building of a prescription map.

Sending data to the Geo Processing Centre (GPC) has been made easy through the PCT website (www.pct-ag.com) where farmers, contractors or agronomists can upload their data direct and then download their processed data, ready to use.



Automatic boom section control

TeeJet has recently introduced *BoomPilot* which provides automatic boom section control for sprayers and spreader equipment to minimise costly chemical consumption.

BoomPilot records the GPS location and the location of the applied areas in your field. When a section of your sprayer boom overlaps one of the applied areas, BoomPilot automatically switches that boom section off. When the boom re-enters the unapplied area, the boom section is turned on once again. This automation can be a very useful tool on point rows, on curved rows and at the end of each pass.

"Automatic on and off control of sprayer booms sections is becoming much more critical in spraying and spreading applications today," says Peter Alexander of TeeJet Australasia. "The *BoomPilot* reduces overlap and saves money on material inputs, fuel, time and operator fatigue."

BoomPilot offers automatic boom shut-off with the capability of controlling up to 15 boom sections, independent of one another. The product is an add-on device to existing GPS guidance systems or receivers and can be used in conjunction with most third party rate controls.



RANGER



NAVIGATOR



COMMANDER



SARITOR

Capacities to suit every demand and application...

Enquiries: (08) 8343 9999

Completely new dimension in broadcast sprayers, configured to suit your needs.

- RANGER 2500
- NAVIGATOR 3000 and 4000
- COMMANDER 5000, 7000 and 9000
- SARITOR 4800

www.HARDI.com.au



Your sprayer specialist